

WELLINGTON



YACHT PARTNERS BELLA FAMIGLIA



LOA:	32' 9" (9.98m)	Delivery/Model Year:	2018
Beam:	11' 9" (3.57m)	Builder:	BACK COVE
Max Draft:	3' (0.91m)	Type:	Cruiser
Clearance:	12' (3.66m)	Staterooms:	1
Tonnage:	15.00	Fuel Cap:	185 Gal
Speed:	24 Knots 28 Knots	Water Cap:	80 Gal
Flag:	USA	Engines:	1x, Volvo Penta, D6 , 435 HP
Location:	Punta Gorda, Florida United States	Price:	\$425,000 USD
VAT Paid:			

Wellington Yacht Partners, LLC
One Maritime Drive
Portsmouth, Rhode Island 02871
United States

P: (401) 683-6070
info@wellingtonyachts.com
www.wellingtonyachts.com

BELLA FAMIGLIA

Additional Specifications For BELLA FAMIGLIA:

LOA:	32' 9" (9.98m)	Delivery/Model	2018
Beam:	11' 9" (3.57m)	Year:	
Max Draft:	3' (0.91m)	Year Built:	2018
Hull Material:	Fiberglass	Builder:	BACK COVE
Hull Config:	Semi-Displacement	Type:	Cruiser
Hull Designer:	Back Cove	Engines:	435 HP, Single, 2017, Inboard, Diesel, Volvo Penta, D6 , 270hrs
Deck Material:	Composite	Staterooms:	1
Tonnage:	15.00	Heads:	1
Range At Cruise Speed:		Captain Cabin:	No
Range At Max Speed:		Classifications:	
Speed:	Cruising 24 Knots Max 28 Knots	MCA: ISM:	
Fuel Capacity:	185 Gal		
Water Capacity:	80 Gal		
Holding Tank:	40 Gal		
Flag:	USA		
Location:	Punta Gorda, Florida United States		
Price:	\$425,000 USD		

INTRODUCTION

BELLA FAMIGLIA is an outstanding example of her class, and an exceptional class it is. The Back Cove 32 Express Cruiser ticks every box and demonstrates why these boats are in such high demand and why Back Cove Yachts of Rockland, Maine, has been so incredibly successful. The "32" was first introduced in 2016 and BELLA FAMIGLIA was built and delivered in 2018 and in many, many ways still shows and operates like a brand-new version of herself. Standard winning features include: centerline transom door; single-level cockpit and pilothouse; convertible dinette with double forward-facing settee across from helm; bow-and (optional) stern thruster; sliding side windows/overhead hatches and a front opening windshield panel; stand-alone shower compartment; centerline berth; hardtop; excellent engine room access via electric opening hatch- all combined on a darn good looking boat.

BELLA FAMIGLIA also features notable options including the VOLVO 435hp electronic diesel, Zipwake automatic trim tabs, (2) zone reverse-cycle A/C system, 7.5 kW Onan-Cummins genset, a QUICK electric / mechanical anchor windlass, a SURESHADE electric cockpit awning and more! She also sports a superb Flag Blue Awlgrip painted hull with state-of-the-art Ceramic protection on the topsides paint and all exterior gel coat surfaces. The electronics suite includes GARMIN navigation with AIS, digital HD radar & autopilot, a FLIR 232 night vision camera and a kickin' Bluetooth stereo system.

Light seasonal usage first in New England and more recently out of the Safe Harbor Burnt Store Marina in Punta Gorda, Florida, this yacht has enjoyed indoor storage when not in use and it shows! Serviced by The Hinckley Company under current fastidious ownership, with all maintenance up to date and up to snuff.

We invite your inspection and are confident condition will not disappoint.

Of note: there is a long waiting list for slips at Burnt Store Marina and if desired, BELLA FAMIGLIA can be purchased with her slip included as part of a deal.

ACCOMMODATIONS

The BACK COVE 32 is produced with the following features:

- Head room: 6'-6" (note: in salon area)
- Interior joinery is cherry w/ varnish finish
- Cherry hull ceilings w/ varnish finish (note: trim slats on side of hull)
- Teak & holly laminate veneer cabin sole in fore cabin
- Hanging lockers are cedar-lined
- (4) Salon portlights w/ (2) sections that slide open, port & starboard
- Interior "snap-in" privacy covers for the salon windows / portlights

Pilothouse

The layout has the helm station all the way forward & to starboard. The helm station guest seating is to port. The galley is aft of the helm station and also to starboard. Opposite is the settee / dinette area. It converts to a double berth (note: measures 48" wide x 90" long without the vertical cushions in-place).

- Convertible dinette w/ Back Cove high-gloss inlaid wood table
- Mate's Seatback, port side (note: moves fore & aft for mate's seating)
- Lewmar overhead hatch w/ Oceanair screen & blind
- Overhead padded vinyl panel inserts w/ cherry battens (note: optional upgrade included w/ "Helm deck trim package")
- (8) Recessed LED lighting
- (2) Reading lights

Fore Cabin

- Headroom: 6'3"
- Island Queen berth on centerline (note: measures 60" wide by 78" long)
- (2) Opening ports, stainless steel w/ interior shades
- Lewmar deck hatch, 20" x 20", aluminum-framed w/ Oceanair sliding screen & blind
- Overhead padded panels for molded headliner
- Hanging locker, cedar-lined (to starboard)
- Locker w/ shelves & drawers (to port)
- Electrical panel (located starboard side, aft)
- Drawers under berth (note: unit hinges up w/ gas-assist struts for access to the bow thruster)

GALLEY

The Galley is "up" in the pilothouse salon area, starboard side.

Kenyon Cooktop stove unit, (2) burner, electric, flush-mounted (note: has "pop-up" sea rails for pot security)

- Cuisinart microwave/convection oven, stainless steel (optional upgrade)
- (2) Vitrofrigo DW100 Refrigeration units, 12 VDC / 110 VAC, stainless steel (note: "pull-out drawer" type, 2nd unit is optional upgrade & located under mate's seat area, port side)
- Sink, stainless steel w/ cover panel
- Single-lever faucet (also functions as sprayer)
- Hot & cold pressure water service
- Cherry cabinetry freshly waxed/oiled

HEAD AND STAND-ALONE SHOWER COMPARTMENT

The BACK COVE 32 is produced with a split head arrangement; the head itself is located aft and to port and the large stall shower with built-in seat is located across to starboard.

- Dometic marine head, electric MSD w/ fresh-water flush
- Holding tank capacity: (40) USG
- Waste & fresh-water quantity gauges
- Macerator pump w/ overboard discharge capability
- Deck discharge access for holding tank
- Exhaust fan, 12 VDC
- AC/Heat vent
- Hot & cold pressure water service for the head & shower
- Vanity w/ sink & single-lever control for the Head
- Shower sump pump, 12 VDC, for shower area
- (2) Opening ports, stainless steel for head & shower
- Privacy skylight for ambient lighting
- Stainless cupholders (2) in shower
- Height adjustable cradle for hand-held shower head

SYSTEMS

Electrical

- The Back Cove 32 is produced with both a 12 VDC ship's service and 120 VAC shore power systems.
- (5) Batteries 12 VDC: (2) 4D ship's service, (3) Group 31 for (2) Engine start, (1) Generator start
- Battery charger
- Shore power system w/ (2) 30 AH connectors & (2) 50' cords
- Galvanic isolator
- Bonding system w/ zinc transom anode
- GFI-protected outlets throughout

- (2) Charging stations, interior (note: USB, 110 VAC & 12 VDC)

Generator

Access to the genset is provided via a separate access hatch in the cockpit sole.

- Onan-Cummins, 7.5 kW, diesel w/ sound box (note: mounted aft in access compartment) with only 97 hours (12-24)

Plumbing

- Fresh water capacity: (80) USG in (2) plastic tanks (note: installed in engine room area, port & starboard w/ connecting line)
- Pressure hot & cold water service to galley, head & shower compartments & cockpit shower
- Hot water heater, 11 gallons
- (3) Bilge pumps, electric Rule 1500 GPH w/ automatic float switches
- Shower sump pump in separate gray water box w/ integral 12 VDC pump
- Washdown; raw water system for cockpit aft & ground tackle forward (note: installed w/ hose in bow anchor well)
- Marelon through-hull valves for installations below the waterline
- Bronze sea-valve for engine raw water intake w/ Zerk grease fitting

HVAC

- Heat & air-conditioning systems, reverse-cycle, (2) zones; 7.5K BTU's for forecabin & 16K BTU's for the salon / helm station

Lighting, Interior

- Overhead lights, recessed, LED & w/ dimmer control
- Reading lights in Salon & Fore Cabin, chrome-finish
- Helm station light, bi-color white & red
- Engine room lighting, LED

Light, Exterior

- Nav lights, Hella, LED (note: mounted on hardtop)
- Anchor light, LED (note: mounted on hardtop)
- Courtesy lights in cockpit

ELECTRONICS

Communication

- VHF; Garmin GHS 11 (note: VHF antennas mounted on mast on hardtop)

Navigation and Performance

- Garmin 8616 multifunction display (16") w/ GPSMAP / Chartplotter
- Garmin GPR radar with radome mounted on mast
- FLIR M-232 Night Vision System (note: w/ "pan & tilt" camera mounted on hardtop)

Autopilot

- Garmin GHP hydraulic reactor w/ GHC 20 control unit

Entertainment

- Fusion stereo, AM / FM / CD w/ (4) speakers; (2) interior and (2) exterior
- SIRIUS XM satellite radio system (note: ready for new subscription)
- Majestic TV & DVD player, flat-screen, 19" (note: mounted in berth area, port side aft with custom adjustment bracket)

HULL and DECK

Hull

- Dark blue Awlgrip topsides (paint) finish (2018)
- White Awlgrip boot stripe
- Gold cove stripe
- VIP resin infused PVC foam core for hull laminates & stringers
- Prop Pocket hull design for decreased draft & prop protection

Deck

- Back Cove white Gelcoat finish
- Graystone non-skid finish
- VIP resin infused balsa core sandwich construction
- Bow sprit, molded composite
- Side decks measure 10" wide
- (4) Mooring cleats, stainless steel Herreshoff-style
- (1) Anchor rode cleat forward, 12", stainless steel
- "Pop Up" cleats; (2) swim platform, (2) aft deck
- Bow and safety rail, 28" high, 1-1/4" 316 stainless steel
- Hardtop with handrails; stainless steel
- Mast for radome support (note: optional upgrade)
- (4) Opening ports, stainless steel
- Deck hatch, Lewmar 20" x 20" w/ aluminum frame and Oceanair sliding screen & blind
- Teak "eyebrow" accent strip on superstructure, port & starboard
- Stainless pennant holder mounted to bow rail

HELM STATION

- Seastar hydraulic steering w/ tilt helm
- Power steering (Optional upgrade)
- Wheel, Stazo w/ wood rim and Back Cove logo
- Helm Seat, Arrigoni Design Uc-1 adjustable w/ "flip-up" armrests, tan marine-grade vinyl upholstery
- Teak grating, adjustable & removable, for foot-support & enhanced standing vision
- Footrests, adjustable, stainless steel w/ teak steps (note: one located to starboard at helm, (2) located to port for guest seating)
- Dash panel: cherry (note: part of optional upgrade "Helm Deck Trim Package")
- Volvo engine controls (note: electronic)
- Zipwake automatic trim tabs
- Windshield: 3-section, tempered glass w center opening panel
- (3) Windshield wipers w/ fresh-water wash
- Sleipner Sidepower bow & stern thruster controls
- Ritchie binnacle compass
- Air horn, compressed air (note: mounted on hardtop)
- Electrical panel w/ lockable box for system battery switches (note: located at the starboard side of the helm station)

COCKPIT

- Swim platform with recent davit system for tender
- Swim ladder, folding, stainless steel (note: integral w/ swim platform)
- Transom door on centerline
- (2) L-settees aft, port & starboard w/ integral storage
- Settee fabric coverings, striped blue / white Sunbrella
- Lazarette access hatch w/ gas strut assist
- (2) Cockpit tables: cherry and maple w/ varnish finish w/ stainless pedestal
- (2) Stainless drink holders
- Molded side boarding steps w courtesy lighting
- Pop-up fender ties

PROPULSION

BELLA FAMIGLIA is powered by the Optional VOLVO D6-435 Turbo-Aftercooled (6) cylinder marine diesel that's rated at 435 HP at 3,500 RPM's. With this engine, the owner reports a 23-24 knot cruise at some 3,000 RPM & a top end at WOT (3,500 RPM) of 27-28 knots.

The main engine room access is via an opening pilothouse deck section. It's electrically operated and, when fully opened, provides some 32" of clearance for ease of access.

- Engine Hours: 270 (12-24)
- Volvo electronic vessel control engine control (note: single-lever)
- Zipwake Automatic Trim Tab System, Series "S"
- (4) Blade propeller, NIBRAL ("Ni Br Al" alloy), 24" x 28" #4 cup
- Propeller shaft, Aquamet 2" stainless steel
- PSS dripless shaft seal
- Fuel capacity: 185 USG (note: in (1) plastic tank)
- Racor fuel filter
- Insulated engine room
- Large engine room access hatch, electric linear actuator operation
- Access ladder
- Aluminum engine room sole plate
- Secondary engine room access hatch forward by helm station (note: w/ hydraulic assist)
- Alternator, 110 AH
- Wet engine exhaust system
- Engine Room air intakes mounted high on deck area (note: no ingestion of water spray)

INVENTORY, ADDITIONAL

Ground Tackle

- Anchor windlass, QUICK 12v w/ chain rode; "up" & "down" foot-control
- Switches on deck and remote up/down switch at helm
- Bow sprit, molded composite w / anchor mount & roller, Lewmar
- Bow anchor well

Canvas

- Aft entrance curtains
- Interior covers for salon windows, snap-on
- (2) Covers for cockpit settees, white
- Cover for cockpit table, white
- Sureshade cockpit awning system (optional upgrade, electric deployment)

Safety

- USCG gear (note: including PFD's w/ storage bag)
- Fire extinguishers
- Xintex Fireboy halon fire extinguishing system in engine room, automatic / manual
- Stainless handrails; hardtop, swim platform
- Swim ladder that can be deployed from the water
- Remote windlass switch at helm
- Wipers w wash feature
- FLIR night vision camera
- Horn; 12v stainless trumpet
- Misc
- Dock lines & fenders

EXCLUSIONS

- Decor items

Disclaimer

The Company offers the details of this vessel in good faith, but cannot guarantee or warrant the accuracy of this information nor warrant the condition of the vessel. A buyer should instruct his agents or his surveyors to investigate such details as the buyer desires validated. This vessel is offered subject to prior sale, price change, withdrawal without notice and tax when applicable. Measurements are in US units.

Wellington Yacht Partners, LLC
One Maritime Drive
Portsmouth, Rhode Island 02871
United States

P: (401) 683-6070
info@wellingtonyachts.com
www.wellingtonyachts.com

BELLA FAMIGLIA

Port Quarter Docked



Foredeck



Stainless Anchor and Windlass Detail



Cabin Top Looking Aft



Windshield



Hardtop



Wellington Yacht Partners, LLC
One Maritime Drive
Portsmouth, Rhode Island 02871
United States

P: (401) 683-6070
info@wellingtonyachts.com
www.wellingtonyachts.com

BELLA FAMIGLIA

Cabin Trunk



Starboard Side Deck



Wellington Yacht Partners, LLC
One Maritime Drive
Portsmouth, Rhode Island 02871
United States

P: (401) 683-6070
info@wellingtonyachts.com
www.wellingtonyachts.com

BELLA FAMIGLIA

Cockpit w Awning



Port Quarter w Awning from Dock

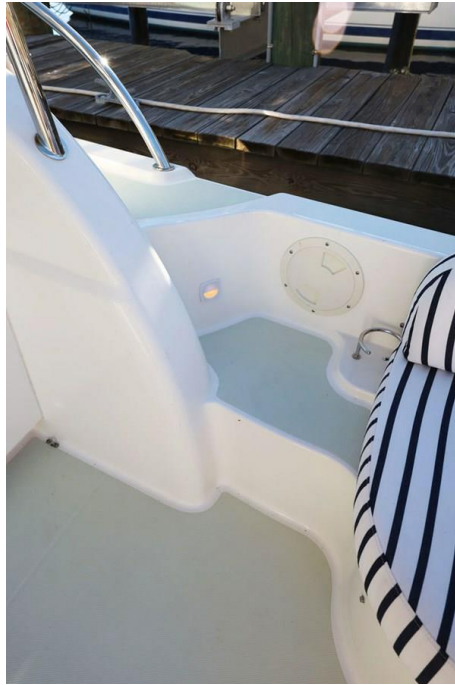


Wellington Yacht Partners, LLC
One Maritime Drive
Portsmouth, Rhode Island 02871
United States

P: (401) 683-6070
info@wellingtonyachts.com
www.wellingtonyachts.com

BELLA FAMIGLIA

Side Cockpit Boarding



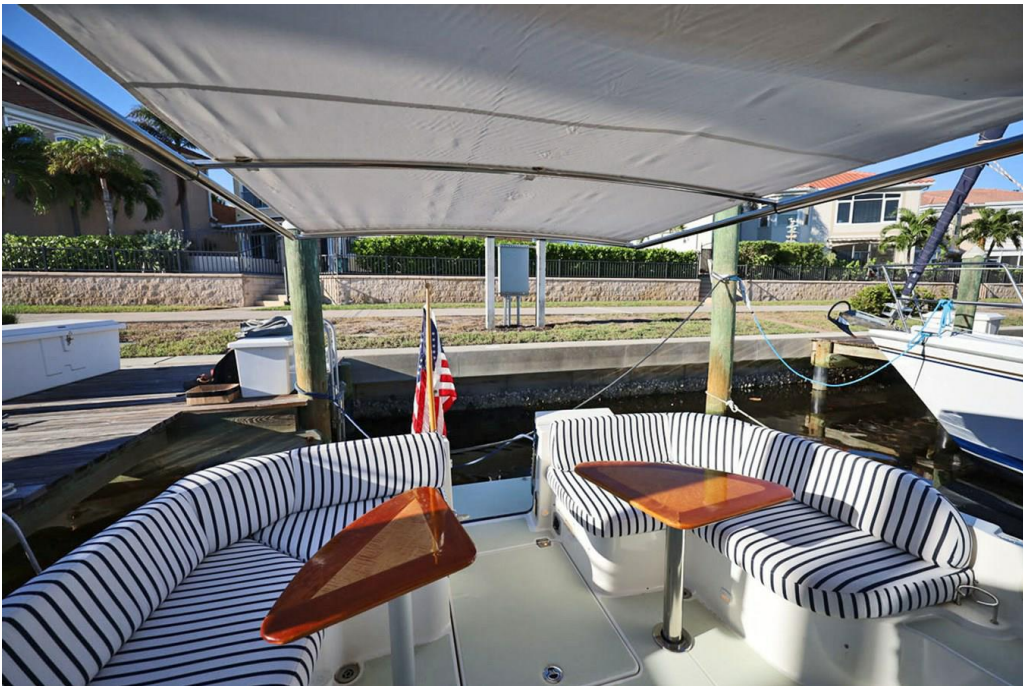
Cockpit Walk-thru to Pilothouse



Cockpit Table Detail



Sureshade Cockpit Looking Aft



Pilothouse from Cockpit



Full Convertible Dinette



Dinette in Forward Seating Mode



Pilothouse Galley



Helm



Helm Looking Inboard



Helm Port Lower



Helm Looking Outboard



Helm Starboard Lower



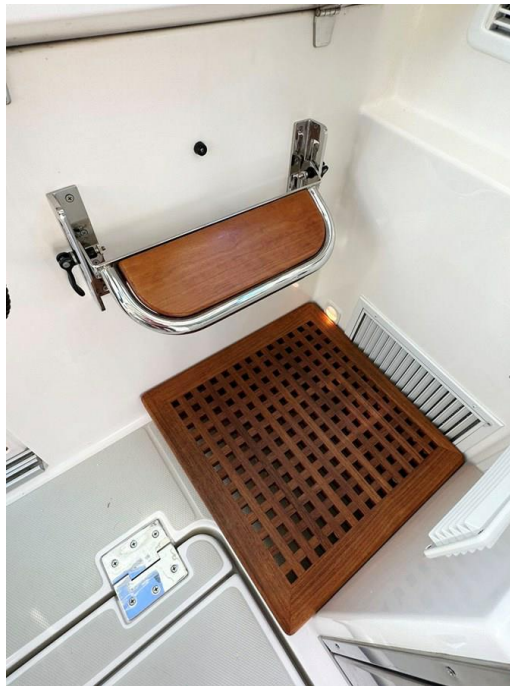
Tilt Wheel



Wheel Detail



Helm Step and Footrest



Overhead Hatch Pilothouse



Companionway Slider



Island Berth



Berth Detail



Wellington Yacht Partners, LLC
One Maritime Drive
Portsmouth, Rhode Island 02871
United States

P: (401) 683-6070
info@wellingtonyachts.com
www.wellingtonyachts.com

BELLA FAMIGLIA

Forward Cabin Looking Aft



Stand Alone Head



Shower



Electrical Panel



Foredeck Storage Locker



Engine Room

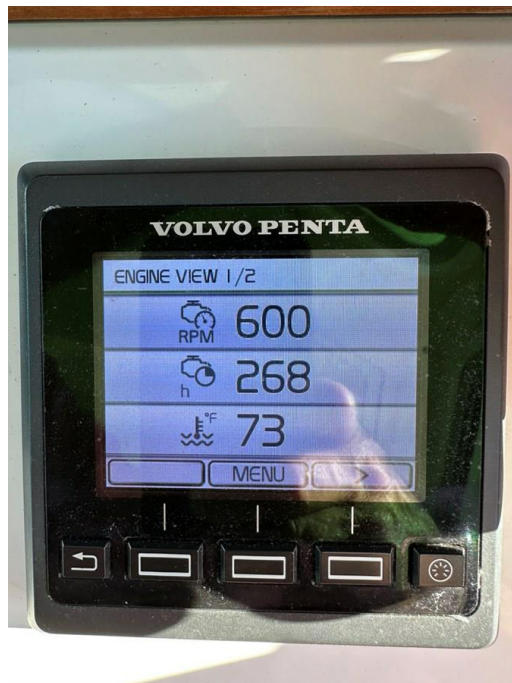


Wellington Yacht Partners, LLC
One Maritime Drive
Portsmouth, Rhode Island 02871
United States

P: (401) 683-6070
info@wellingtonyachts.com
www.wellingtonyachts.com

BELLA FAMIGLIA

Engine Hours



Generator Hours



Remote Battery Switches



Radar Mast Detail



Wellington Yacht Partners, LLC
One Maritime Drive
Portsmouth, Rhode Island 02871
United States

P: (401) 683-6070
info@wellingtonyachts.com
www.wellingtonyachts.com

BELLA FAMIGLIA

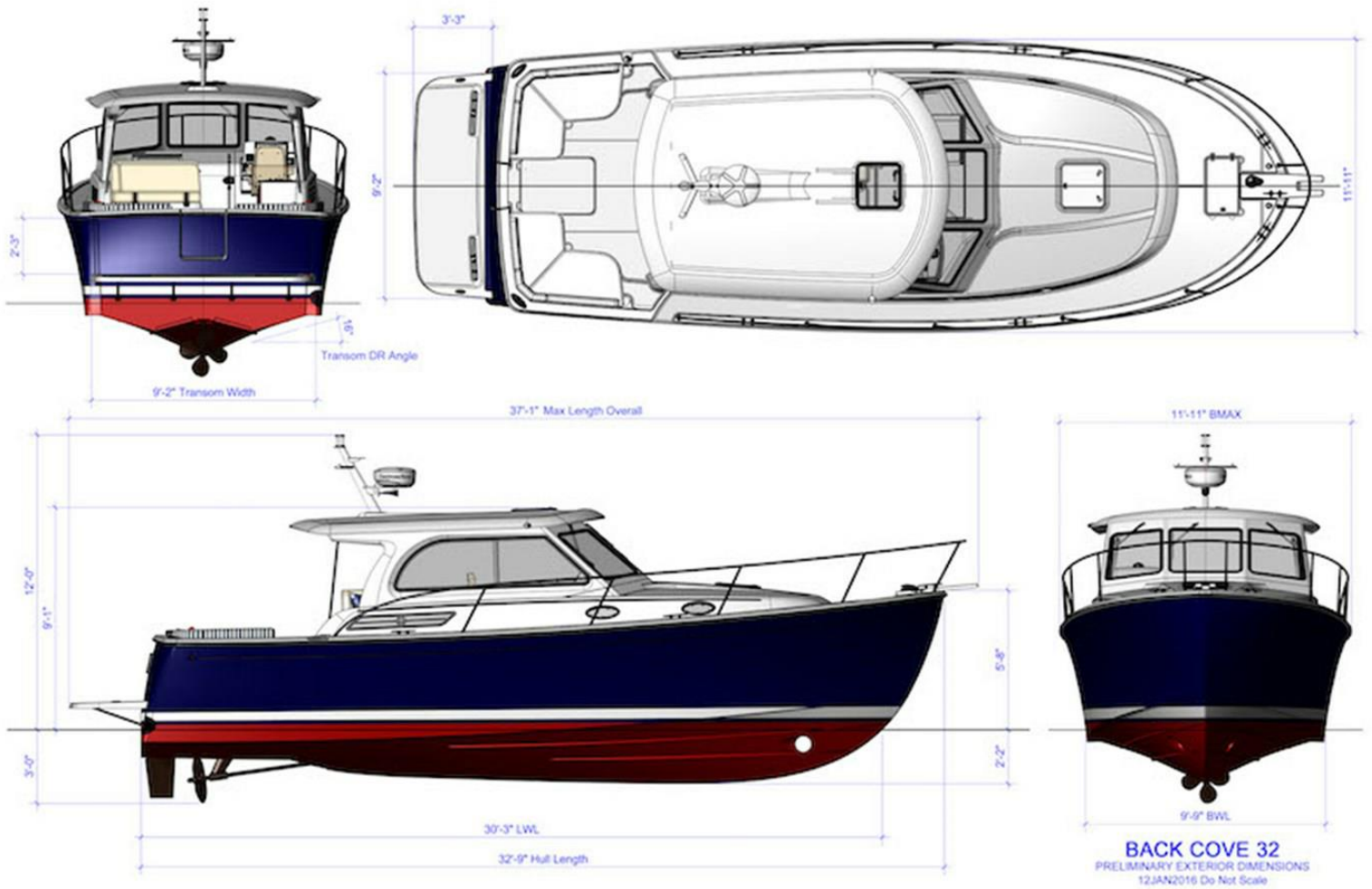
ZIPWAKE Controls



Cockpit Table Cover



Exterior



Wellington Yacht Partners, LLC
One Maritime Drive
Portsmouth, Rhode Island 02871
United States

P: (401) 683-6070
info@wellingtonyachts.com
www.wellingtonyachts.com

BELLA FAMIGLIA

Interior Layout



Wellington Yacht Partners, LLC
One Maritime Drive
Portsmouth, Rhode Island 02871
United States

P: (401) 683-6070
info@wellingtonyachts.com
www.wellingtonyachts.com

BELLA FAMIGLIA