

# WELLINGTON



## YACHT PARTNERS Introducing the Duchy 27



<b>LOA:</b>	27' (8.23m)	<b>Delivery/Model Year:</b>	2025
<b>Beam:</b>	9' 3" (2.79m)	<b>Model:</b>	Duchy 27
<b>Max Draft:</b>	2' 9" (0.84m)	<b>Builder:</b>	COCKWELLS
<b>Tonnage:</b>	3.20	<b>Type:</b>	Cruising Yacht
<b>Speed:</b>	20 Knots 25 Knots	<b>Staterooms:</b>	1
<b>Location:</b>	Portsmouth, Rhode Island United States	<b>Fuel Cap:</b>	70 Gal
<b>VAT Paid:</b>		<b>Water Cap:</b>	24 Gal
		<b>Engines:</b>	1x, Yanmar, 4LY, 230 HP
		<b>Price:</b>	\$409,778 USD

---

Wellington Yacht Partners, LLC  
One Maritime Drive  
Portsmouth, Rhode Island 02871  
United States

P: +1-401-683-6070  
[info@wellingtonyachts.com](mailto:info@wellingtonyachts.com)  
[www.wellingtonyachts.com](http://www.wellingtonyachts.com)

Introducing the Duchy 27

### Additional Specifications For Introducing the Duchy 27:

<b>LOA:</b>	27' (8.23m)	<b>Delivery/Model</b>	2025
<b>Beam:</b>	9' 3" (2.79m)	<b>Year:</b>	
<b>Min Draft:</b>	2' 9" (0.84m)	<b>Year Built:</b>	2025
<b>Max Draft:</b>	2' 9" (0.84m)	<b>Builder:</b>	COCKWELLS
<b>Hull Material:</b>	Fiberglass	<b>Model:</b>	Duchy 27
<b>Hull Config:</b>	Monohull	<b>Type:</b>	Cruising Yacht
<b>Deck Material:</b>	Teak	<b>Engines:</b>	230 HP, Single, Inboard, Diesel, Yanmar, 4LY,
<b>Tonnage:</b>	3.20	<b>Staterooms:</b>	1
<b>Range At Cruise</b>		<b>Sleeps:</b>	2
<b>Speed:</b>		<b>Heads:</b>	1
<b>Range At Max</b>		<b>Captain Cabin:</b>	No
<b>Speed:</b>	Cruising 20 Knots	<b>Classifications:</b>	
	Max 25 Knots	<b>MCA: ISM:</b>	
<b>Fuel Capacity:</b>	70 Gal		
<b>Water Capacity:</b>	24 Gal		
<b>Holding Tank:</b>	5 Gal		
<b>Location:</b>	Portsmouth, Rhode Island United States		
<b>Price:</b>	\$409,778 USD		

## **INTRODUCTION**

The Duchy 27 is a sophisticated and capable day boat, offering comfortable seating for six, an expandable varnished table in the cockpit, additional seating with a backrest on the engine box, and helm and companion seating. On-deck features include refrigeration and a cleverly designed transom door/step leading to a spacious swim platform with a shower. Built-in steps with multiple handrails and a bow rail ensure safe access to the foredeck, where twin bow rollers and an anchor windlass make picnics and mooring effortless.

The pilothouse offers both helm and companion adjustable seating, with opening hatches and side windows that provide excellent light, ventilation, and 360-degree visibility. Engine controls, gauges, navigation instruments, and all 12-volt DC switches are conveniently located at the helm. The pilothouse provides security and protection, designed to handle the challenging conditions of the English coastline.

The Duchy 27 also functions as a capable weekender, offering creature comforts and amenities rarely found on a yacht of this size. The interior includes a proper V-berth with a filler, a functional galley, and an ensuite head with a shower, all crafted to a high standard. Upon closer inspection, the quality and attention to detail that Cockwells in Cornwall, UK, is renowned for become apparent, following decades of building a wide variety of custom yachts.

The standard synthetic teak side decking, cockpit sole, swim platform, and coaming caps maintain a traditional look in a practical, low-maintenance manner. Features like solid paneled cabinetry, dovetail-jointed drawers, customized storage, neat and clean wiring and plumbing, and the structural hull matrix reflect the high level of craftsmanship.

Classically designed and handcrafted, Duchy Yachts are semi-custom vessels built by skilled craftsmen who blend traditional shipwright techniques with modern luxury, technology, and performance. With over 35 launched to date, the Duchy 27 has earned a strong reputation for quality workmanship, reliability, and seaworthiness. Vessel built to Recreational Craft Directive (RCD), Cat C. Hull #37 of the Duchy 27 is now available as a new delivery through Wellington Yacht Partners, North American exclusive dealers for Cockwells Classic and Modern Boatbuilders. Proudly British built – British strong.

## **HULL**

- Molded GRP hull with molded structural matrix bonded to hull
- Interior moldings for a clean, finished look
- Rub rail with stainless striker at shearline
- Large molded GRP swim platform with protective stainless perimeter striker
- Gelcoat topsides – flag blue
- Painted, white boot stripe and gold cove stripe
- Epoxy barrier coat and blue bottom paint
- Varnished transom

## **DECK**

- Molded GRP deck with PVC foam core
- White gelcoat finish with molded non-skid on cabin top
- Synthetic laid teak side decks
- Electric windlass with bow and helm controls
- 22 lb Stainless Bruce anchor with rode and chain
- All deck hardware 316 stainless
- (2) Bow rollers for anchor and mooring lines
- Stainless double bow rail leading aft to pilothouse
- Handrails on pilothouse leading aft to cockpit
- (2) Pop-up spring line cleats
- (3) Fixed stainless bow/stern cleats
- (3) Fender eyes
- Twin horn
- Stainless steel ensign staff (also serves as emergency tiller)
- LED Navigation lights

## **PILOTHOUSE**

- Spacious, semi-enclosed area with exceptional visibility and full headroom
- Bespoke helm panel with gauges for engine rpm, temp, fuel and water levels
- DC switch panel at helm
- (2) adjustable helm and passenger swivel seats on sliders with custom fold-up footrests
- Stanzo wheel with wood rim
- Garmin navigation package including chartplotter, autopilot, radar, GPS, speed/depth
- VHF radio
- UFlex compass
- Varnished trim and grab handle to port of companionway
- (2) Lewmar sliding overhead hatches
- Fitted Houdini Marine windows with opening side windows
- Three-drawer storage unit under helm seat with custom storage for glasses and tools provided and built in
- Webasto DC refrigeration under passenger seat
- (2) Lockers provide access to battery compartments
- (2) Exalto wipers with washers
- Drink holders each side
- Additional handrails in pilothouse
- Engine box backrest and handrails
- Pilothouse rear curtain enclosure with twin doors

## **COCKPIT**

- Spacious cockpit features convenient walk-through transom leading to swim platform for easy swimming, and boarding from dock, finished with synthetic laid teak
- Retractable stainless swim ladder
- Built in steps each side for easy access to side decks
- Synthetic laid teak cockpit sole and coaming caps
- Upholstered cushions and backrests for aft seating and engine box
- Storage lockers below seating and (2) Storage cabinets
- Access to sea water engine intake and exhaust system below seating
- Varnished oak folding table with soft lined canvas stowage bag
- Drink holders
- Stamoid tonneau cockpit cover
- Stamoid cockpit cushion covers

## **MECHANICAL SYSTEMS**

### Engine and Transmission

- Upgraded Yanmar 4LY 230 hp diesel engine for 20 knot cruise/24 knot max
- Python drive couplings and bearings
- Engine key switch at helm console
- Alta flex top-mount mechanical throttle/shift controls
- Bow and stern thrusters

### Engine Exhaust, Fuel, Control and Cooling Systems

- Wet exhaust system with water trap exhaust silencer
- Stainless steel 87gal fuel tank, located under cockpit sole
- ISO flexible marine fuel hosing with Racor filter and water separator
- Vetus raw water intake strainer

### Engine Space

- Molded GRP lift-up engine box fully insulated for noise reduction
- with gas strut assist for quick and easy access
- Custom branded engine air intake vents on cabin sides
- Automatic fire extinguisher

### Stern Gear and Propellers

- Stainless steel 1.5 " prop shaft with Ambassador rope cutter
- GRP stern tube with water cooled bearing and Tides Marine seal
- Keel protected 4-Blade bronze propeller, 21" diameter

### Water System

- Aquafax fresh water plumbing
- (2) Vetus water tanks, 58 gal total
- Whale freshwater pump
- 110 volt hot water heater –heated by engine or shore power
- Pressurized water available at galley sink, sink/shower in head and hot/cold stern shower

### Black and Gray Water

- Tecma electric toilet with direct discharge to holding tank
- Galley and head sinks drain via gravity discharge
- Shower base drain via Whale pump
- Holding tank 7 gal with gravity drain overboard via valve or deck pump-out

### Bilge

- Whale Supersub 650 automatic bilge pump with alarm
- Whale manual bilge pump in cockpit
- Johnson bilge pump in cockpit well

## **ELECTRICAL AND ELECTRONICS**

- 12V DC/120 volt AC electrical system
- Custom DC panel at helm with breaker switches for all DC functions
- Dedicated AGM battery for engine start
- (3) AGM 100 AH batteries (upgraded for inverter)
- Both engine start and domestic batteries charged by alternator or AC charger
- Solar panels on PH, 110w total
- Victron battery monitor at helm
- GFI protected 120 volt AC outlet in galley
- USB charging outlet at helm and galley area
- Victron 120 volt battery charger/inverter combo unit
- 120 volt shore power system ELCI protected
- 120 volt AC 30 amp shore power inlet with 50' shore cord
- DC LED lighting throughout interior and exterior including courtesy lights
- Fusion Marine Stereo with DAB and 2 speakers

## **INTERIOR**

### General

- Solid oak interior joiner work including paneled locker fronts, head door, and dovetail jointed drawers, meticulously finished in polyurethane varnish
- Teak and holly effect cabin soles

### Main Cabin

- Accessed from pilothouse via sliding acrylic companionway door
- Forward seating area converts to a double berth
- Waterproof Sunbrella upholstery
- Storage cabinet starboard aft
- Hanging locker port aft with fire extinguisher inside
- Light and ventilation provided by a deck hatch, three opening portholes and a solar vent
- Anchor locker accessed through locker forward of seating area

### Galley

- Solid surface counter with stainless sink and removable cover
- Hot/cold faucet
- Microwave oven
- Storage lockers above and below counter with custom storage for handmade Cornish crockery, glasses and cutlery, all provided
- Full headroom (companionway open)
- Fire blanket

### Head

- Fully enclosed ensuite head aft to starboard
- Solid surface counter with stainless sink
- Storage below and outboard counter
- Fresh water faucet with retractable shower head
- Tecma electric toilet
- Opening porthole and solar vent for light and ventilation

## **ADDITIONAL**

- USCG safety package
- (4) Fenders with custom covers
- (4) Dock lines
- Binder with user manuals and guides for all equipment

## **Disclaimer**

The Company offers the details of this vessel in good faith, but cannot guarantee or warrant the accuracy of this information nor warrant the condition of the vessel. A buyer should instruct his agents or his surveyors to investigate such details as the buyer desires validated. This vessel is offered subject to prior sale, price change, withdrawal without notice and tax when applicable. Measurements are in US units.

## Cruising off Newport



## Ground Tackle



---

**Wellington Yacht Partners, LLC**  
One Maritime Drive  
Portsmouth, Rhode Island 02871  
United States

**P: +1-401-683-6070**  
**info@wellingtonyachts.com**  
**www.wellingtonyachts.com**

**Introducing the Duchy 27**

## Foredeck



## Pilothouse Top



---

**Wellington Yacht Partners, LLC**  
One Maritime Drive  
Portsmouth, Rhode Island 02871  
United States

**P: +1-401-683-6070**  
**info@wellingtonyachts.com**  
**www.wellingtonyachts.com**

**Introducing the Duchy 27**

**Side View Underway**



**Aerial Quarter view**



---

**Wellington Yacht Partners, LLC**  
One Maritime Drive  
Portsmouth, Rhode Island 02871  
United States

**P: +1-401-683-6070**  
**info@wellingtonyachts.com**  
**www.wellingtonyachts.com**

**Introducing the Duchy 27**

## Full Speed off Newport



## Bow View



---

**Wellington Yacht Partners, LLC**  
One Maritime Drive  
Portsmouth, Rhode Island 02871  
United States

**P: +1-401-683-6070**  
**info@wellingtonyachts.com**  
**www.wellingtonyachts.com**

**Introducing the Duchy 27**

## Fall Cruise



## Harbor Cruise



---

**Wellington Yacht Partners, LLC**  
One Maritime Drive  
Portsmouth, Rhode Island 02871  
United States

**P: +1-401-683-6070**  
**info@wellingtonyachts.com**  
**www.wellingtonyachts.com**

**Introducing the Duchy 27**

**Quarter View**



**At Rest**



---

**Wellington Yacht Partners, LLC**  
One Maritime Drive  
Portsmouth, Rhode Island 02871  
United States

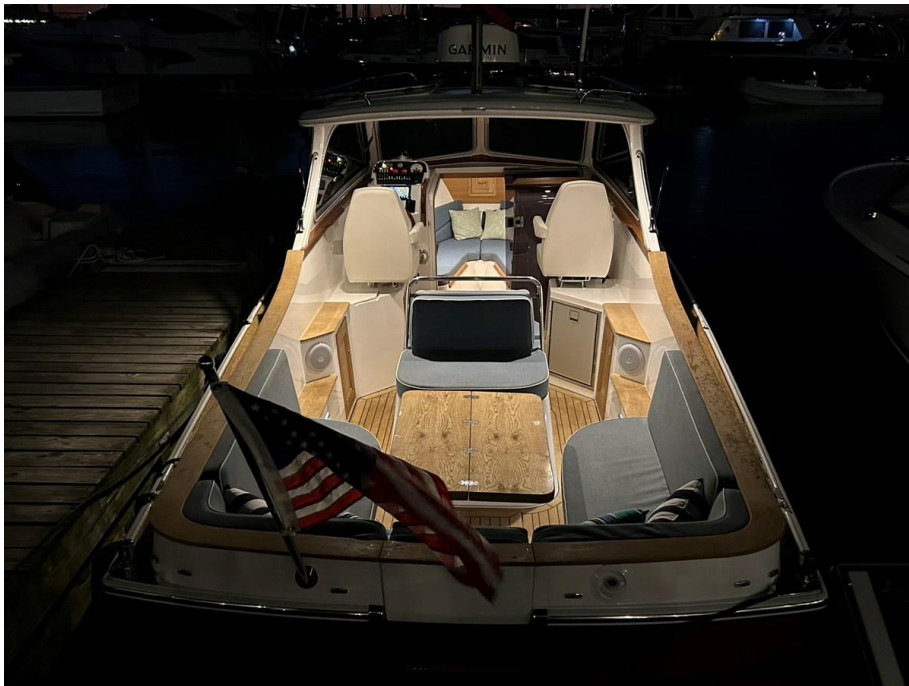
**P: +1-401-683-6070**  
**info@wellingtonyachts.com**  
**www.wellingtonyachts.com**

**Introducing the Duchy 27**

**Pilothouse Looking Aft**



**Night Lights**



---

**Wellington Yacht Partners, LLC**  
One Maritime Drive  
Portsmouth, Rhode Island 02871  
United States

**P: +1-401-683-6070**  
**info@wellingtonyachts.com**  
**www.wellingtonyachts.com**

**Introducing the Duchy 27**

## Refrigeration



## Side Deck Steps



---

**Wellington Yacht Partners, LLC**  
One Maritime Drive  
Portsmouth, Rhode Island 02871  
United States

P: +1-401-683-6070  
[info@wellingtonyachts.com](mailto:info@wellingtonyachts.com)  
[www.wellingtonyachts.com](http://www.wellingtonyachts.com)

**Introducing the Duchy 27**

**Ice Bucket**



**Pilothouse**



## Pilothouse Forward



## Helm Seat



---

**Wellington Yacht Partners, LLC**  
One Maritime Drive  
Portsmouth, Rhode Island 02871  
United States

P: +1-401-683-6070  
[info@wellingtonyachts.com](mailto:info@wellingtonyachts.com)  
[www.wellingtonyachts.com](http://www.wellingtonyachts.com)

**Introducing the Duchy 27**

## Helm



## Max Speed



**Wellington Yacht Partners, LLC**  
One Maritime Drive  
Portsmouth, Rhode Island 02871  
United States

P: +1-401-683-6070  
info@wellingtonyachts.com  
www.wellingtonyachts.com

**Introducing the Duchy 27**

**Helm Step**



**Passenger Seat**



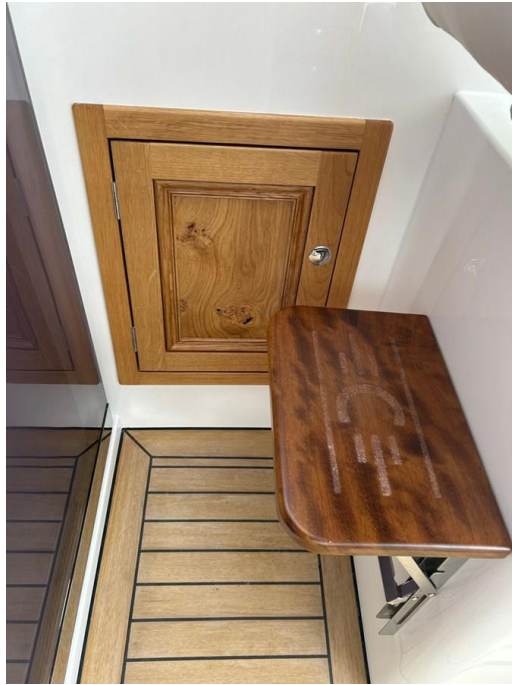
---

**Wellington Yacht Partners, LLC**  
One Maritime Drive  
Portsmouth, Rhode Island 02871  
United States

**P: +1-401-683-6070**  
**info@wellingtonyachts.com**  
**www.wellingtonyachts.com**

**Introducing the Duchy 27**

**Passenger Step**



**Forward from Companionway**



---

**Wellington Yacht Partners, LLC**  
One Maritime Drive  
Portsmouth, Rhode Island 02871  
United States

**P: +1-401-683-6070**  
**info@wellingtonyachts.com**  
**www.wellingtonyachts.com**

**Introducing the Duchy 27**

**Looking Aft**



**Galley**



## Custom Crockery



## Custom Mugs



**Wellington Yacht Partners, LLC**  
One Maritime Drive  
Portsmouth, Rhode Island 02871  
United States

P: +1-401-683-6070  
[info@wellingtonyachts.com](mailto:info@wellingtonyachts.com)  
[www.wellingtonyachts.com](http://www.wellingtonyachts.com)

**Introducing the Duchy 27**

**Starboard Aft**



**Head**



**Custom Step over Trash Bin**



**Trash Bin**



## Stereo and Lights



## Hanging Locker



## Switch Panel



## Cockpit Cover



**Wellington Yacht Partners, LLC**  
One Maritime Drive  
Portsmouth, Rhode Island 02871  
United States

**P: +1-401-683-6070**  
**info@wellingtonyachts.com**  
**www.wellingtonyachts.com**

**Introducing the Duchy 27**

## Transom and Swim Platform



## Transom Door Open



---

**Wellington Yacht Partners, LLC**  
One Maritime Drive  
Portsmouth, Rhode Island 02871  
United States

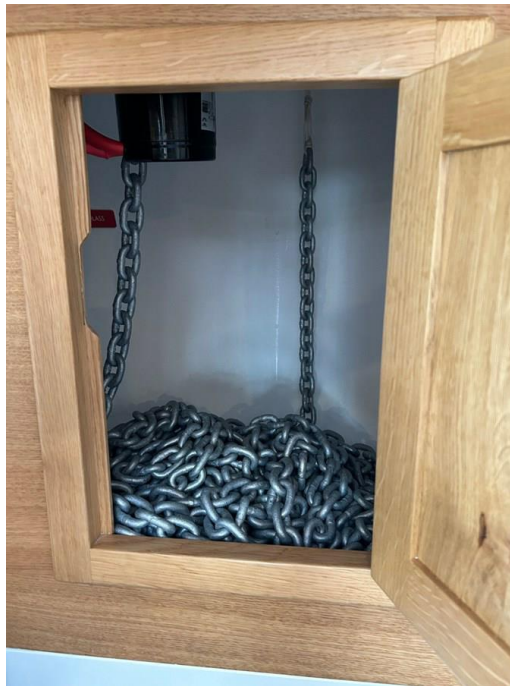
P: +1-401-683-6070  
[info@wellingtonyachts.com](mailto:info@wellingtonyachts.com)  
[www.wellingtonyachts.com](http://www.wellingtonyachts.com)

**Introducing the Duchy 27**

## Engine Access



## Chain Locker



**Underbody Aft**



**Underbody Forward**



## Deck View



## At Anchor



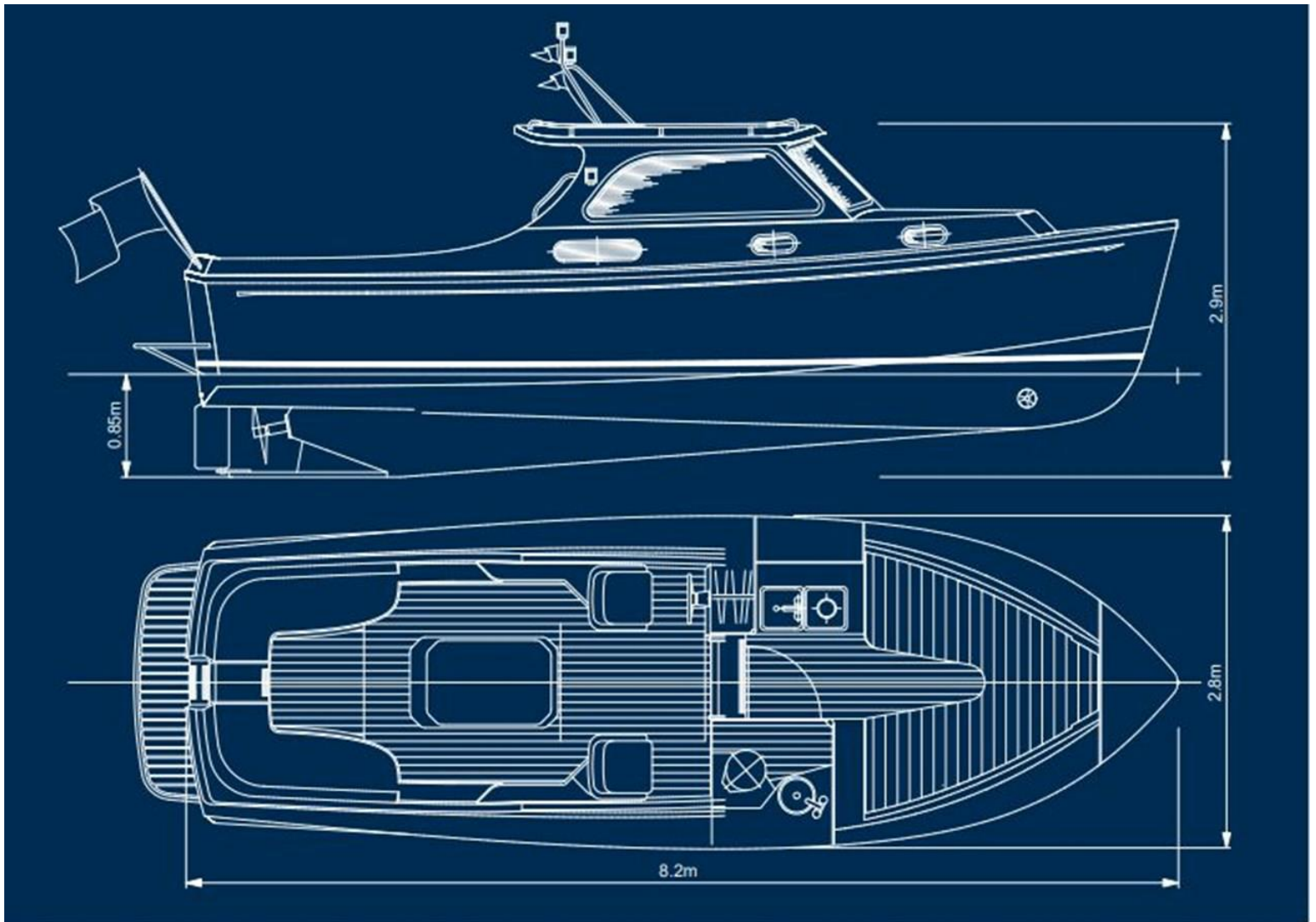
---

**Wellington Yacht Partners, LLC**  
One Maritime Drive  
Portsmouth, Rhode Island 02871  
United States

**P: +1-401-683-6070**  
**info@wellingtonyachts.com**  
**www.wellingtonyachts.com**

**Introducing the Duchy 27**

# LAYOUT



**Wellington Yacht Partners, LLC**  
One Maritime Drive  
Portsmouth, Rhode Island 02871  
United States

P: +1-401-683-6070  
[info@wellingtonyachts.com](mailto:info@wellingtonyachts.com)  
[www.wellingtonyachts.com](http://www.wellingtonyachts.com)

**Introducing the Duchy 27**