

WELLINGTON



YACHT PARTNERS

KETEL TWO



LOA:	54' (16.46m)	Delivery/Model	2015
Beam:	16' 6" (5.03m)	Year:	
Max Draft:	5' 1" (1.55m)	Model:	54 Flybridge Express
Tonnage:	30.31	Builder:	AUSTIN PARKER
Speed:	30 Knots	Type:	Cruising Yacht Express
Flag:	US	Staterooms:	3
Location:	South Dartmouth, Massachusetts United States	Fuel Cap:	740 Gal
VAT Paid:		Water Cap:	159 Gal
		Engines:	2x, MAN, V8-900, 900 HP
		Price:	\$845,000 USD

Wellington Yacht Partners, LLC
One Maritime Drive
Portsmouth, Rhode Island 02871
United States

P: +1-401-683-6070
info@wellingtonyachts.com
www.wellingtonyachts.com

KETEL TWO

Additional Specifications For KETEL TWO:

LOA:	54' (16.46m)	Delivery/Model	2015
Beam:	16' 6" (5.03m)	Year:	
Max Draft:	5' 1" (1.55m)	Year Built:	2015
Hull Material:	Fiberglass	Builder:	AUSTIN PARKER
Deck Material:	Teak	Model:	54 Flybridge Express
Tonnage:	30.31	Type:	Cruising Yacht Express
Speed:	Cruising 30 Knots	Engines:	900 HP, Twin, 2015, Inboard, Diesel, MAN, V8-900,
Fuel Capacity:	740 Gal	Staterooms:	3
Water Capacity:	159 Gal	Heads:	2
Holding Tank:	74 Gal	Captain Cabin:	No
Flag:	US	Classifications:	
Location:	South Dartmouth, Massachusetts United States	MCA: ISM:	
Price:	\$845,000 USD		

INTRODUCTION

KETEL TWO is a gorgeous yacht with a unique and distinctive design that turns heads wherever she goes. The look is contemporary but still eminently practical. The term 'express cruiser' truly applies, with an easy 30 knot cruise and gobs of entertaining space on deck between the cockpit, pilothouse/salon and the flybridge.

Without doubt this sporty express cruiser ticks just about every box today's market demands: easy docking with bow and stern thrusters (without the added complexity and maintenance of pod drives); innovative swim platform that lowers into the water to become 'the beach'; a tender garage - truly an elegant solution to the age old dilemma of what to do with the tender; FAST cruise with twin 900 hp Man diesels; a dynamite layout on deck that allows for indoor and outdoor living and entertaining for a gaggle of family and friends by joining the pilothouse/salon and cockpit seamlessly; a twin seat at the helm; an insanely nice owner's cabin forward with an awesome head with separate stall shower; comfortable seating for six to eight to have dinner al fresco in the cockpit; a galley with full height refrigerator- and the list goes on!

She is a large-volume yacht with lovely appointments including painted and textured surfaces that are soothing and inviting, which fully exhibit the best of Italian design and execution. And last but not least this Austin Parker boast three cabins and three heads - rare in this size range. Bravo!!

ABOUT AUSTIN PARKER

Austin Parker's CEO is Sebastiano "Gianni" Gravagno, who, to say the least, is an industry leader and veteran with an incredible track record of success. As Commercial Director of Chris Craft in the seventies he oversaw the production of over 500 boats per year. In the eighties he became the sole sales manager of Mochi Craft, a shipyard of 120 boats per year ranging in size from 33 to 56 feet. Other success came by way of opening the Italian market to American brands by becoming the sole importer of Bertram, Cigarette and Blackfin. Gianni then created his own shipyard Antago, which produced 85 yachts and went on to found Cantieri Abati Yachts as well as Cantieri Austin Parker. Austin Parker specializes in semi-custom construction, allowing for a high degree of personalization in each boat. This, along with excellent build-quality, sets an Austin Parker apart from the rest of the competition from both Europe and the US.

ACCOMODATIONS OVERVIEW

One level step in from the cockpit you enter a salon that exudes grace and comfort. A U-shaped settee to stbd has storage under and the table has two leaves to fold out to sit six or more for dinner. Opposite to port is along cabinet with TV on lift, and storage under for liquor and glasses. Up a step to the helm with a large double helm bench with flip up bolster for support if standing. The carbon helm console is well laid out and visibility from the helm is excellent. Two overhead deck hatches serve as skylights for added light and air in the cabin.

Down several stairs is a beautiful galley which has a cathedral ceiling effect under the overhang of the windshields. There is a large single basin polished stainless steel sink, plenty of counter space, a four-burner electric cooktop and microwave convection oven. Forward is a full-size refrigerator and freezer with painted panels as covers to match the interior decor. Two opening portlights and an oven vent add air.

Three staterooms below include a master cabin forward with the island berth offset to port, large windows, two opening portlights and lockers and hanging locker. There is direct access to an en-suite head with large ceramic basin sink, bidet, toilet, and tiled stall shower with waterfall head and shower wand.

Across from the galley is a day head with sink, toilet, and tiled stall shower. Down two steps you find matching guest cabins to port and stbd, each with two twin beds. Plumbing is ready in a cabinet for your future washer/drier.

All bedrooms and the salon have TVs. The interior decor is a mix of fabric textured and lacquer painted surfaces.

On the exterior, there is a submersible swim platform and up three stairs through a transom door into the cockpit which features a long L shaped settee to stbd with two movable stools and a table to sit six or eight for cocktails and dinner. There is a cockpit fridge to port. The deck walkways are wide and look great in teak decking. A huge sun pad is secured to the bow. The flybridge has a U-shaped settee to stbd with hi-lo table and a double bench seat at the helm.

A captain's cabin is located under the stbd settee seat in the cockpit and features a berth, shower, toilet and fold-down sink. At present, this space is used for storage.

FLYBRIDGE HELM

- Garmin GPS19X MFD with NMEA 2000 antenna (2020)
- GPS Map 760
- GHS 11 VHF handset (2020)
- Riviera Phoenix compass

BRIDGE DECK/PILOUTHOUSE HELM

- Garmin GPSMap 8500 (2020)
- Garmin Autopilot (2020)
- Garmin Autopilot display (2020)
- VHF 315 marine radio (2020)
- Garmin GVC 10 Scanning Sonar with GT 30 transducer (2020)
- Garmin GMR Fantom 18 Closed array radar dome (2020)
- Riviera Urania binnacle compass
- (2) Boning digital engine monitor/alarm display units

Note: Original Raymarine electronics units still on board in storage and can go with the boat.

ENTERTAINMENT

- Fusion MS-RA770 Apollo Radio in salon with JL Audio speakers in Salon and aft deck (2020)
- (4) Samsung TV's including 28" in Salon Cabinet with lift plus 28" mounted master cabin plus 28" mounted port stateroom plus 28" mounted stbd stateroom
- Raymarine Satellite TV dome
- Aber Marine, Kima digital TV antenna with Raymarine digital antenna control unit
- Pioneer DVH-340UB CD/DVD player in salon cabinet
- Pioneer DVH-330UP CD/DVD player master stateroom
- (6) Speakers: (4) Bose and (2) Pioneer

Mechanical

- The engine room is accessed from the cockpit by means of a large hatch, while the carefully designed layout of the engines and systems allows trouble-free inspection of all parts.
- Upgrade to Man 900 hp from standard Man 800 hp - \$60,000 option - Under 500 hours
- Engine interval service work by MAN specialists (2021)
- Optional Man V-8 900 HP diesels - (4 stroke turbo after-cooled, common rail, V-drive)
- Racor 1000 MA primary filter water separators
- Stainless steel shafts 2 3/4"
- PPS water cooled dripless shaft seals
- Double bronze struts with cutlass bearings
- Racor 500 FG filter water separator to genset
- Dometic Condaria Easy Chiller Air Conditioning/heating system 36,000 btu
- Steering system is BCS electro/hydraulic with twin rudders and single hydraulic dual actuator with tillerarm/torsion bar
- Trim tabs hydraulic
- Vetus Bow Thruster
- Stern thruster added (**2019**)
- H&B Technics hydraulic submersible swim platform
- Besenzoni PI series hydraulic transom passarelle, teak/stainless with fold-away railing
- Hydraulic transom raised up for dinghy storage

ELECTRICAL

- 115 V / 230 V systems AC - with shore, generator and alternators charging
- Hubbel 50 A 125/250 V shore cord
- Trasfostatic 240/120V transformer for galvanic isolation
- 24V DC system
- Onan 11 kW diesel generator with 240 v/60Hz output -
- Batteries include (6) sealed 8D/12V for house - Four sealed 4D/12V for engine starting - One sealed # 31 12V for generator start (**replaced 2023**)
- Battery charger - MasterVolt 24/80-3 three bank
- Battery charger - MasterVolt 24/30-3 three bank
- Cabin lights LED
- Windshield wipers
- ACR searchlight
- Quick 24V winch for tender in garage with strap and remote control
- Maxwell 500 capstan winch stbd aft quarter cockpit
- Maxwell RC 10 capstan anchor winch foredeck

PLUMBING

- Tecma marine toilets in owner, guest, and crew quarters with fresh water supply
- Tecma integral 24V macerator from holding tank
- Tecma Bidet in owner's head
- Molded FRP laminated gel coat holding tank - 74 gal
- Vent filter installed for holding tank
- Gray water tank - 66 gal
- Seacocks and thru hull fittings in bronze
- Hot and cold pressure water with two Gianneschi 24V water pumps
- Water heater
- Salt water washdown
- (4) Rule 2000 gph bilge pumps with float switches plus one additional Rule 500 in aft sump (2023)

ADDITIONAL

- 12-person life raft in valise under cockpit seat (certification expired)
- Swim ladder stored under cockpit seat
- Covers for cockpit seats
- Stainless steel plow anchor on bow anchor roller
- 300' chain anchor rode with anchor swivel
- Fenders and dock lines
- Magnum 24" life ring
- Safe installed in owner's stateroom

Disclaimer

The Company offers the details of this vessel in good faith, but cannot guarantee or warrant the accuracy of this information nor warrant the condition of the vessel. A buyer should instruct his agents or his surveyors to investigate such details as the buyer desires validated. This vessel is offered subject to prior sale, price change, withdrawal without notice and tax when applicable. Measurements are in US units.

Beam Shot



Port Hull



Starboard Bow Running Shot



Starboard Beam Running Shot



Starboard Quarter Running Shot



Starboard Salon Settee Looking Aft



Salon U Settee Looking Aft



Salon U-Settee Looking Forward



Pilothouse Looking Forward



Helm



Helm Dash



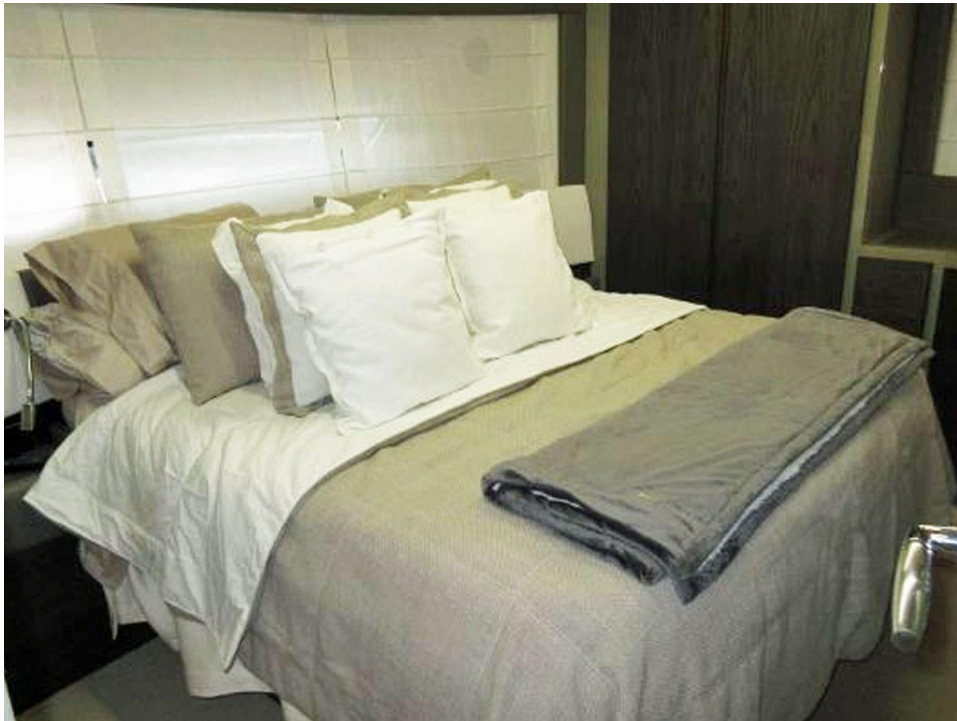
Helm Double Settee



Port Salon Cabinetry



Master Berth



Master Cabin Looking Aft



Master Head



Starboard Guest Cabin Looking Aft



Port Cabin Looking Aft



Looking Down at Galley



Galley Looking Aft



Salon Dedicated Dish and Glass Storage



Stand-up Refrigerator



Galley Sink



Foredeck w Sunpad



Anchor Windlass and Cleats



Foredeck Sunbathing Pad



Flybridge Settee



Flybridge Helm Dash



Cockpit Looking Forward to Port



Cockpit Looking Forward to Starboard



Cockpit Aft



Cockpit L Settee



Cockpit Looking Aft from Salon



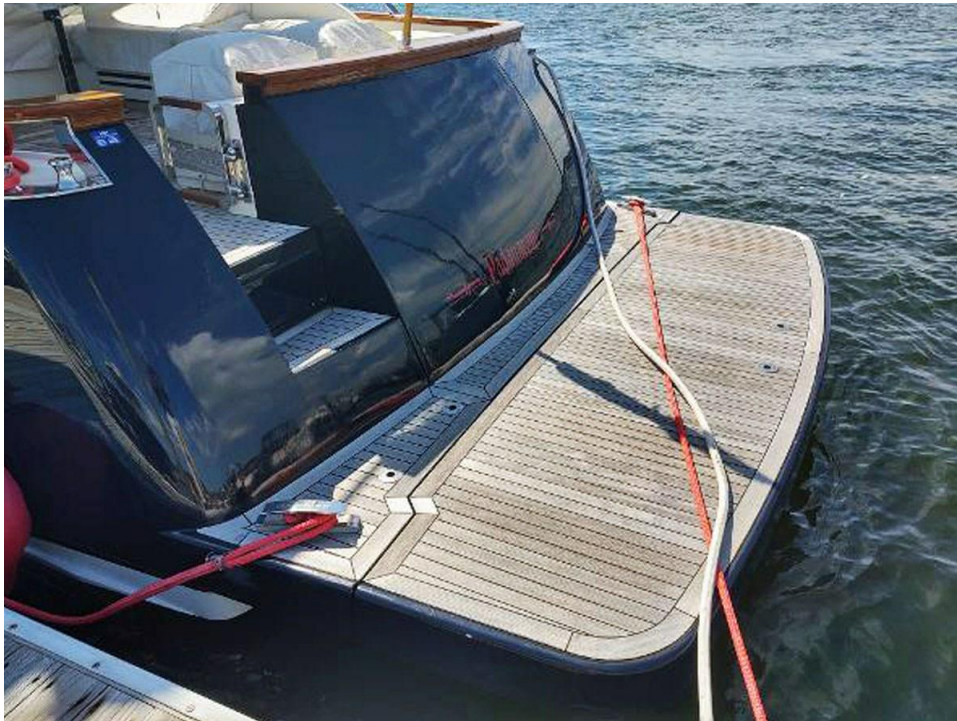
Port Quarter at Dock



Tender Garage Door Open



Swim Platform 'Up'



Swim Platform 'Down'



Starboard Engine



Onan Generator



Racor Fuel Filters



Prop



Interior Layout Drawing

