

WELLINGTON



YACHT PARTNERS

PEGASUS



LOA:	36' 6" (11.13m)	Delivery/Model	2002
Beam:	11' (3.35m)	Year:	
Tonnage:	6.00	Model:	Hardtop Sedan Twinjet Express
Speed:	30 Knots 36 Knots	Builder:	HUNT YACHTS
Flag:	US	Type:	Motor Yacht Motor Yacht
Location:	Harpswell Center, Maine United States	Staterooms:	1
VAT Paid:		Fuel Cap:	273 Gal
		Engines:	2x, Yanmar, 440 HP
		Price:	\$305,000 USD

Wellington Yacht Partners, LLC
One Maritime Drive
Portsmouth, Rhode Island 02871
United States

P: +1-401-683-6070
info@wellingtonyachts.com
www.wellingtonyachts.com

PEGASUS

Additional Specifications For PEGASUS:

LOA:	36' 6" (11.13m)	Delivery/Model	2002
Beam:	11' (3.35m)	Year:	
Min Draft:	1' 10" (0.56m)	Year Built:	2002
Hull Material:	Fiberglass	Refit Year:	2014
Hull Config:	Deep Vee	Builder:	HUNT YACHTS
Hull Designer:	C. Raymond Hunt Associates	Model:	Hardtop Sedan Twinjet Express
Deck Material:	Nonskid painted	Type:	Motor Yacht Motor Yacht
Tonnage:	6.00	Top:	Hardtop
Speed:	Cruising 30 Knots Max 36 Knots	Engines:	440 HP, Twin, 2002, Inboard, Diesel, Yanmar, 987hrs / 972hrs
Fuel Capacity:	273 Gal	Staterooms:	1
Flag:	US	Heads:	1
Location:	Harpswell Center, Maine United States	Captain Cabin:	No
Price:	\$305,000 USD	Classifications:	
		MCA: ISM:	

INTRODUCTION

A truly special offering, PEGASUS is a semi-custom Hunt 36 Hardtop Sedan Express with twin Hamilton waterjets and Yanmar 440's complete with a Vector Controls (formerly Rolls Royce) joystick control tied into the throttles. A bow thruster is also included. PEGASUS is one of, if not *the*, finest-running waterjet-powered boats this broker has ever seen. So much thought went into making PEGASUS the ultimate fast day boat, while also properly equipping her to be a comfortable and functional pocket cruiser. Custom mufflers from Soundown, along with insulation and teak decking on the bridge deck sole, make for a super-quiet boat, even when running easily at 30 knots at only 2,900 rpms. A custom centerline transom door makes getting on and off the boat a cinch, while boarding from the side decks is accomplished via an unvarnished portion of the teak coaming boards and a teak step port and starboard. A nice feature of the Hunt 36 are the wide side decks. PEGASUS has a proper stainless rail which comes back to the aft end of the bridge deck, making for a safe approach to the foredeck. Another custom feature is the large teak bowsprit, varnished bright, with integral anchor roller so a plow-type anchor may live on the bow at all times.

The helm of this boat is low in profile. Sight lines are excellent, and with a fully-adjustable Stidd helm chair, PEGASUS is comfortable for any sized person at the helm. Across from the helm to port and in front of the generous L-settee is a companion pedestal chair; this one also adjusts fore and aft and has a teak ladderback to match the custom teak ladderback detail behind the L-settee that fronts the cockpit. There are ample storage lockers and cup holders on the bridge deck, which is well-ventilated, thanks to large, sliding-glass side windows (both front and back sections open); an electric front-opening panel in the windshield at the helm (with manual front-opening panel to port) and rear curtains and two overhead Lewmar hatches with screens. Recessed lighting in the overhead on a dimmer switch at the helm sets the mood at night.

The cockpit is finished in light gray nonskid. The entire cockpit sole can be easily removed from the boat, and a large opening hatch provides ready access to the jets and drivetrain below. The cockpit has seating across the full width of the transom, with a removable section for the transom door. Access forward to the bridge deck is on the starboard side. The teak cockpit coaming, except for where one boards from the sides, is varnished bright and wraps all the way around the back of the cockpit.

The transom door on the centerline provides access to the teak swim platform, which has a retractable swim ladder and two pop-up stainless cleats. Stainless handles port and starboard on the transom help when exiting the water or working with the tender. Custom davits were designed and installed in 2019 for carrying a proper tender. There is a recessed hot and cold shower in the cockpit, as well as two rod holders in the coaming for trolling.

Additional features on deck include teak toe rail with inset stainless chocks; teak handrails on the hardtop and cabin trunk; teak eyebrow on coach roof sides; proper mast with spreaders for radar, recent Wi-Fi antennae/booster; recent rigid solar panel on hardtop; recent Echo-max radar transponder; steaming/anchor light, flag halyard, remote-controlled spotlight and hailer/foghorn. A SeaWatch TV antenna is also mounted on the hardtop. Two NicroFico stainless solar vents for additional ventilation when underway -- one for the head and the other in the large foredeck hatch for the cabin below.

HULL AND DECK COLORS/DETAILS

- Flag Blue topsides; Gold cove stripe; White boot stripe with red accent stripe above; Red bottom
- White gelcoat with contrasting gray sprayed non-skid decks
- Dark blue Ultraleather exterior cushions with contrasting red piping on pedestal chairs
- Recessed engine room vents in topsides
- Hardtop with stainless handrails on the underside running fore and aft and teak handrails mounted on top
- Teak toe rail with custom inset bow and mid ships chocks
- Teak anchor pulpit with (2) Herreshoff style cleats, roller for plow type anchor
- Recessed anchor locker with access from below deck as well
- Washdown spigot and extendable hose in anchor locker
- Stainless steel bow rail; extended farther aft to back edge of deck house

ACCOMMODATIONS and LAYOUT

Herreshoff style interior with white bulkheads and solid teak and cherry trim. Interior layout features a convertible dinette with seating for four, which converts to a full-length 6'-10" adult berth. Custom locker outboard of dinette with storage cubby w door and 'nightstand' when dinette is converted to a berth; Ocean Frigast reading lamp; remote inverter/charger control. Shelving fore and aft with cherry fiddle and additional (2) Ocean Frigast reading lamps.

Large, enclosed head with ensuite shower is across from the dinette to starboard. AC ventilation with opening port for additional light and comfort. Stainless sink with cabinet beneath. Lockers outboard. Vacu-flush toilet. Stainless towel bar. Locker with cherry door behind head.

GALLEY

Galley forward and completely rebuilt in 2020 to accommodate extended cruising. Sharp microwave and convection oven built into cabinetry above. Stainless sink.

New under-counter cold plate refrigeration/freezer with sliding shelving in lieu of 12v camper style reefer. Furrion two burner induction stove top. Pull-out drawer for trash basket with open section for quick disposal of small items. Extra deep and large drawers.

- Stainless sink
- Custom 'spice' rack; paper towel holder
- Seagull freshwater spigot and filter
- Ocean Frigast lamp
- Folding step near reefer and berth
- Clock and Barometer on angled bulkhead between galley and head
- 12v plug at dinette
- Espar thermostat control at dinette
- 110v outlets at dinette; galley and in head (GFCI protected)

Hanging locker to port forward of dinette. Large shelf above with custom locker outboard for AC vent and storage, with fiddled shelf above.

All the way forward is a large V-berth with filler, with shelving outboard and above, with door on forward bulkhead providing access to anchor locker. Two additional Ocean Frigast reading lamps port and starboard. Storage beneath accessed via locker doors and from above under cushions. Large opening hatch above, and opening ports with screens providing plenty of light and ventilation. Two Hella 12v fans.

- Teak and holly sole
- (4) Opening ports with screens
- Large overhead Lewmar hatch (lens replaced 2020) with screen
- Teak binoculars holder near companionway
- Teak companionway steps

BRIDGE DECK AND HELM AREA

The bridge deck is protected by a large two-panel windshield with lower front-opening panels (the one in front of the helm is electric), a fiberglass hardtop with two overhead opening hatches and large 'sedan style' sliding side windows with drop curtains aft. Helm and companion pedestal seating along with a generous L-settee with custom teak ladder back. Storage beneath. Teak sole with 'day hatch' for quick engine room access.

- Teak bi-fold companionway doors and teak and Lexan bi-fold hatch
- Teak chart box to port of the companionway with clear Lexan top and extra teak handle for the mate
- 12v outlet at companion seat; fold down footrest; teak recessed drink holder and cubby beneath
- Teak handrail starboard companionway
- Port companion chair with teak ladder back and teak arms
- Teak table for L-settee
- Teak handrails port and starboard inside of hardtop
- Stainless and powder-coated handrails for side boarding

Helm:

- Stidd helm seat with custom joystick control extension on starboard armrest
- Teak unit outboard of helm for 12v panel; cupholders; storage locker
- Teak-rimmed Edson SS wheel; teak fiddles on top

COCKPIT

- Self-bailing cockpit
- Teak swim platform with stainless retractable ladder
- Cockpit hot/cold shower in recessed locker with door
- Swimming ladder
- Full beam transom settee with removable center section
- Transom door on centerline
- Large deck hatch to access aft bilge areas
- Teak coaming and side boards; varnished but left natural in boarding areas forward

NAVIGATION and COMMUNICATION EQUIPMENT

- Garmin GPS plotter/radar/sounder 2021
- ECHOMAX Active-X-Band target enhancer 2021
- Wi-Fi antennae booster 2020
- Garmin autopilot 2021
- Depth sounder
- Log-speedometer
- Compass
- VHF with hailer
- Horn
- ACR spotlight on mast; dual beam with control pad at helm

INSIDE EQUIPMENT

- Hot water heater; 110v and engine-heated
- Extra water tank installed 2019
- Espar diesel heat throughout vessel
- Air conditioning
- Electric head

MECHANICAL/ENGINE ROOM

Entire bridge deck lifts up to provide excellent access to the engine room. A day hatch is located at the forward end for quick access to battery switches, oil checks etc.

- (2) Yanmar 440hp diesel engines
- Hamilton waterjets with Vector controls joystick docking
- Sidepower bow thruster
- Lectrotab trim tabs
- Racor fuel filter/water separators
- Groco bronze sea strainers
- Firebox automatic fire extinguisher with override switch at helm
- Electric bilge pump
- Macerator pump for holding tank

ELECTRICAL EQUIPMENT

- Shore power inlet; 30 amp
- Electrical circuit: 110V
- Inverter/battery charger
- Electric front-opening window in front of helm

OUTSIDE EQUIPMENT/EXTRAS

- Electric windlass with foot switches on deck forward and remote up/down at helm
- Custom trim tabs with "surfboard" fins

BROKER'S COMMENTS

A mechanical refit was undertaken at Hunt in the winter of 2014, which saw the engines removed and detailed, bilges painted etc. Valves and heads were also replaced and upgraded in 2018. She runs like a top. Easy 30-plus quiet cruise fully loaded. Tracks like a Hunt deep-vee propeller boat, thanks to custom trim tabs with "surfboard" fins. Planes easily at 15 knots and happily cruises all day long at 30 knots.

Hardtop with opening hatches and large sedan-style bridge deck sliding windows make for plenty of light, accessible ventilation and excellent protection from the elements. Super-comfortable L-settee with fully-adjustable teak ladderback chair in front to port and Stidd helm chair to starboard. Teak bridge deck sole. Plenty of storage, drink holders, hard-top recessed lighting and day hatch access to engine room.

Entire bridge deck lifts on electric screw jacks, providing truly excellent access to engine compartment. Built by a knowledgeable yachtsman as the ideal pocket cruiser with lots of detail and sailboat-like practicality. Truly a special boat. Offered for sale by only her second owner. Indoor storage in a heated shed in the offseason since day one. A must-see vessel that will not disappoint -- and wait until you get her out for a sea trial!

We invite your inspection.

EXCLUSIONS

The owner's personal effects are excluded from the sale.

Disclaimer

The Company offers the details of this vessel in good faith, but cannot guarantee or warrant the accuracy of this information nor warrant the condition of the vessel. A buyer should instruct his agents or his surveyors to investigate such details as the buyer desires validated. This vessel is offered subject to prior sale, price change, withdrawal without notice and tax when applicable. Measurements are in US units.

Underway



Foredeck



Teak Anchor Pulpit



Sedan Opening Windows



Bridge Deck Side View



Helm and Companion Seating



Helm



Joystick Control



Port Eng Hours 4-23



Stbd. Eng Hours 4-23



Bridge Deck Cabinetry



Folding Bridge Deck Table



Port Pedestal Chair



Chart/Glove Box



Teak Companionway and Glovebox



Teak Companionway Hatch and Doors



Electric Front Opening Window



Interior Looking Forward



Vee Berth



Interior Looking Aft



Hanging Locker



Convertible Dinette Looking Aft



Galley Looking Aft



Galley Deep Drawer Storage



Galley Refrigeration Under Counter



Induction Stove Top



Breaker Panel



AC/DC Panel



Ensuite Head and Shower



Starboard Bow in Shed



Port Topsides in Shed



Cockpit



Convertible Transom Settee



Transom / Custom Davits



Wellington Yacht Partners, LLC
One Maritime Drive
Portsmouth, Rhode Island 02871
United States

P: +1-401-683-6070
info@wellingtonyachts.com
www.wellingtonyachts.com

PEGASUS

Hardtop Looking Aft



Pegasus_NicroFico stainless solar vent



Echomax Radar Transponder Antenna



Echomax XBand Radar Transponder



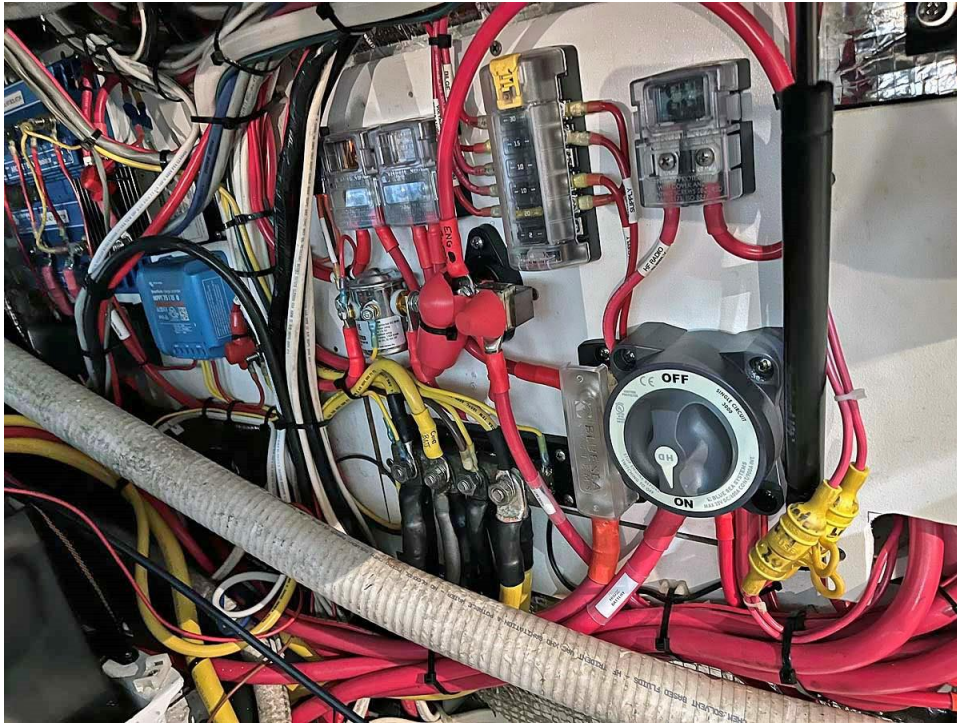
Port Engine



Starboard Engine



Wiring Detail Engine Room



Twin Hamilton Jets and Custom Trim Tabs

