



FOSSER MULTI-ROLE VESSEL

General

Type of Vessel:	Multi-Role Vessel
Built:	1991 Rebuilt 2009
Certification:	MCA Work

Dimensions

Length:	17.0 m
Beam:	7.50 m
Draft:	1.10 m

Performance

Free Running Speed:	8.0 knots
Bollard Pull:	5.0 tonnes
Deck Carrying Capacity:	10 tonnes

Propulsion

Main Engines:	Baudouin 6 M16 (2018)
Total Power:	710 bhp @ 2100rpm
Gearbox:	MG-5112V twin disc 1:80
Bowthruster:	50hp hydraulic

Auxiliary Equipment

Generator No 1:	Kubota 65kw
Generator No 2:	Perkins 65kw
Bilge System	2 x 2000gph pumps
Electrical system:	240v / 24v

Tank Capacities

Fuel Bunkers:	8,000 litres
Fresh Water:	1000 litres

Deck Equipment

Hydraulic Crane:	Hiab 102-4 3700kg @ 2.8m 730kg @ 11m.
Deck Winch:	10t pull
Hydraulic Spud Legs:	12m Hydraulic
Additional:	A-frame & plough Welding set, burning equipment. SWP deployment platform

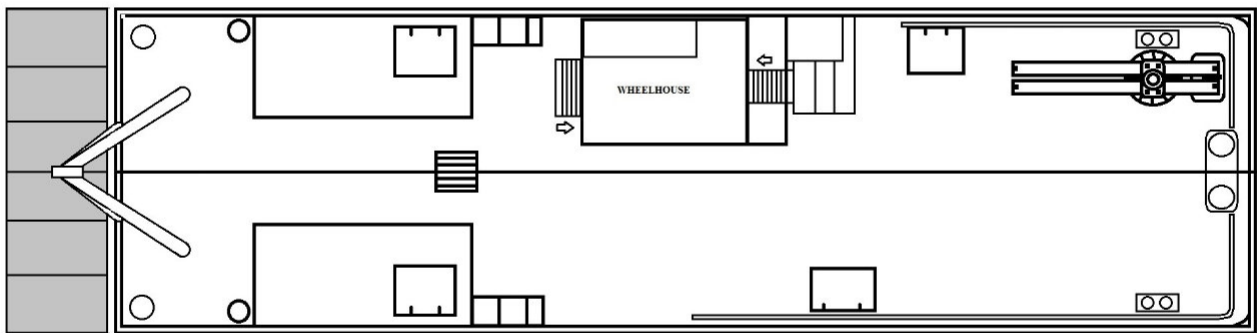
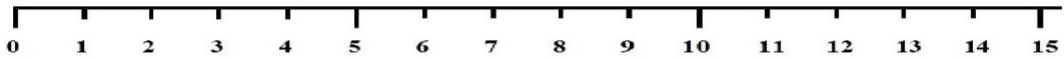
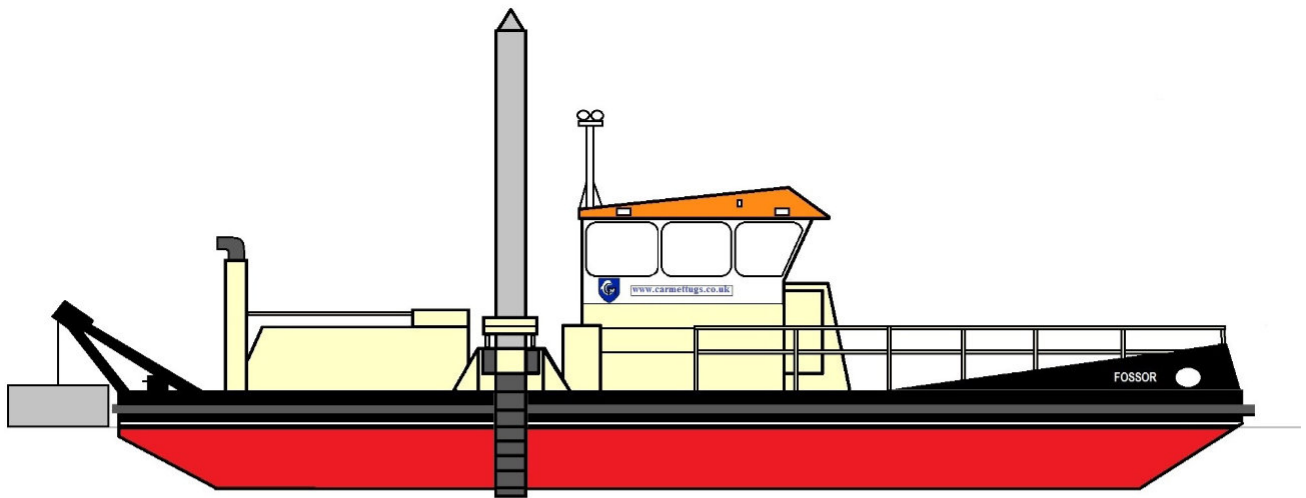
Accommodation

Comfortable, well equipped welfare facilities include galley, bunks, toilet wet room / drying room for 24 hour operations for 4 persons. Large stores area below decks.

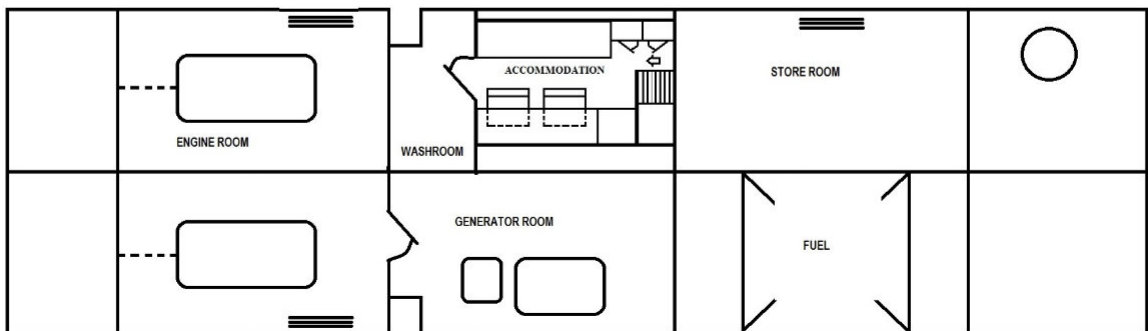
Navigational Equipment

Chart Plotter:	Koden
Echosounder:	Furuno
Compass:	JRC GPS Compass
Radar:	Koden MDC 2560
DGPS:	Furuno GP36
VHF:	Icom DS100
Handheld VHF:	2 x Icom IC-M1
AIS:	JRC Class A
NAVTEX:	NX300

FOSSOR MULTI-ROLE VESSEL



DECK LEVEL



BELOW DECK

In collaboration with



www.scchambers.net

All specifications listed in good faith but without guarantee